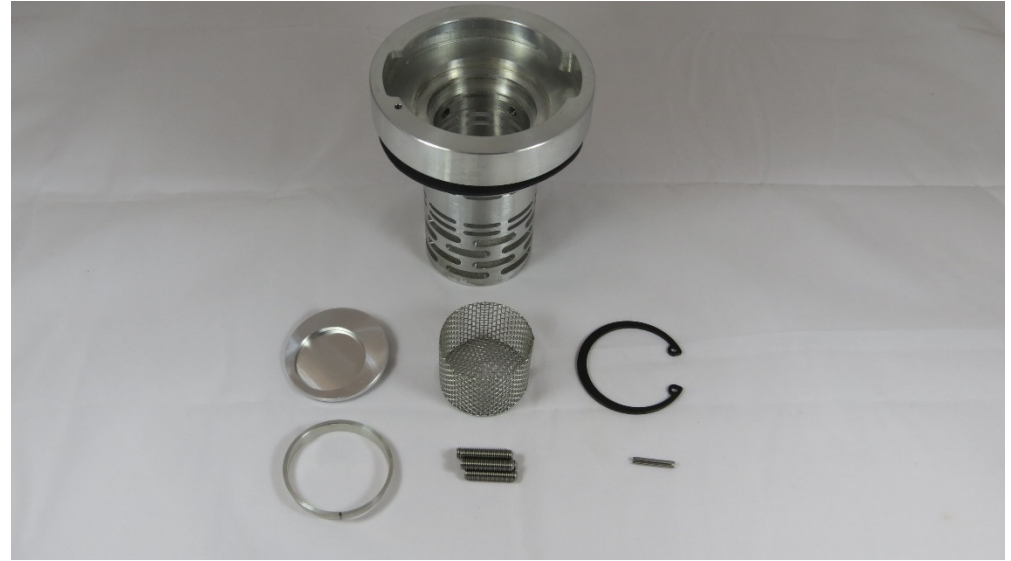




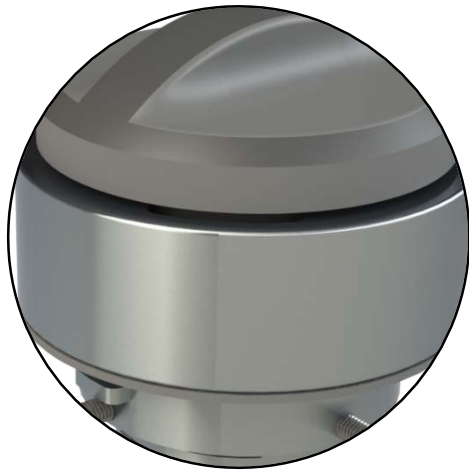
VehicleDefend

Fuel Anti Siphon Device

Product Offering

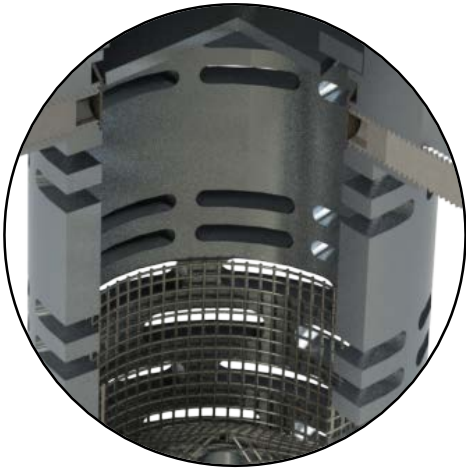


Product Details - Head Height



- OEM Caps (majority fit)
- Lowest 'standard' head height on market
- Mimics the neck of OEM tank for positive lock
- Low/No head options available from launch

Product Details - Minimal Skimming



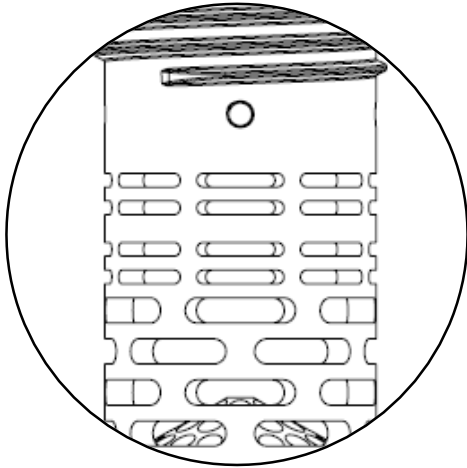
- Prevents large impurities getting into tank
- 1.6mm mesh prevents 3mm dia siphon hose
- Turbulence helps high speed filling
- Shortest neck of ASD

Product Details - Secure & Rapid Installation



- Unique security collar prevents access to grub screws
- Easy & quick to install - no tools or adhesive
- Collar locks in place against engineered step
- Cannot be removed with grub screws in place
- Registered design / patent pending

Product Details - Optimal Engineering for Flow



- Unique, design protected, horizontal aerodynamically optimised hole structure
- Ensures that filling speeds of 120lpm are realistic
- Minimises skimming possible by volume displacement with short neck and thick walls
- Robust strong design is able to withstand attack
- Aperture and basket design gives max hole size of 3mm

Technical Specification

Product Description

Heavy Goods Vehicle Security Equipment: Fuel Anti Siphon Device
 Drop-in to the Fuel Tank Filler Neck & then offers Fuel Cap closure on same
 Precision aluminium assembly, Bayonet mount & Security Fixture fitting
 Visible Level 1 theft deterrent and Physical Level 2 fuel theft prevention

Features & Benefits

Technical Specification

Ease & Security of Fit: Fitting time under 10 minutes, device semi permanently fixed to Fuel Tank Neck

Fuel Cap Compatibility: Tested and Checked with market popular locking and non-locking cap variants

Level 1 Visible Security: Clear Signal to Thief that the Fuel Cap is not 'standard look; on Fuel Tank Neck

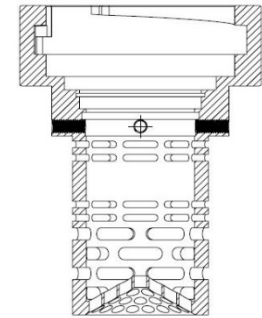
Level 2 Siphon Security: Combination of Aluminium Apertures & Wire Mesh Diffuser limit access to 3mm dia

Level 2 Attack Security: Stress Engineered Architecture to all Wall Thicknesses and Apertures

Limited Skimming: Minimal Engagement into the Fuel Tank, unless Tank to brim very little Skimming

Fuel Dispenser Nozzles: Compliant with all popular 25mm models in particular ZVA25

Fuel Flow Characteristics: Tested and Checked on High Flow Rate Nozzles / Pumps above 120 lpm



Kit as Purchased	Anti Siphon with Wire Diffuser & Fixing Screws & Security Collar
Instruction Video Online	Provided as required for own website
Aluminium Body	Automotive Engineering Grade LM2 / A 384 / ADC 12 / EN 1706 AC: 46100